

myosa®

MYOFUNCTIONAL SLEEP APPLIANCE

FOR TEETH GRINDERS

SOFT - MEDIUM GRINDERS



MOULDABLE
OPTIMUM COMFORT

www.myosa.com

WORLDWIDE PATENTS, FOR MORE INFORMATION VISIT MYORESEARCH.COM

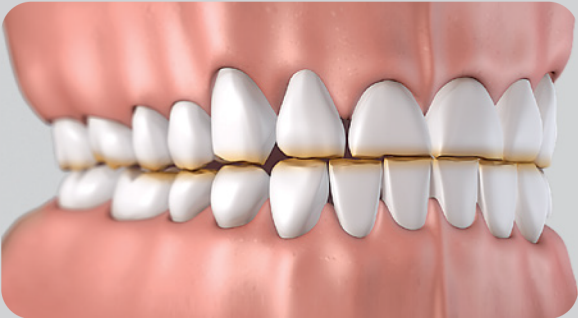
Understanding the Problem

Teeth grinding, or bruxing, is a common symptom associated with mouth breathing and can be exacerbated by stress or nervous tension. This bruxing can cause damage to the teeth including visible enamel wearing, tooth cracking or excessive tooth mobility. While the entire *Myosa*[®] range will offer some protection against the damage caused by bruxing, the *Myosa*[®] for *Teeth Grinders* is designed specifically for this purpose and provides a protective barrier between the teeth. Intended to wear with use, these appliances can be easily replaced to prevent damage to the dentition.

Immediate protection from further damage

Bruxing is defined as grinding, gnashing or clenching of the teeth. While it is primarily caused by nervous tension, anxiety or stress, bruxing is predominately an unconscious habit and takes place during sleep.

The *Myosa*[®] for *Teeth Grinders* range fits snugly to the upper arch, with good retention, during sleep and provides immediate protection for both the dentition and temporomandibular joints from any further damage caused by bruxing.



Treatment with Oral Appliances

Patients who experience damage from habitual bruxing, which is defined as grinding, gnashing or clenching of the teeth and is mostly an unconscious habit, are generally prescribed full coverage splints to alleviate the problem. However, custom made splints require time consuming procedures.

Treatment with a soft flexible oral appliance is now considered the most convenient way to protect against the harmful effects of night time bruxing. These appliances function by providing a gentle protective barrier between the upper and lower teeth thereby limiting the damaging effects of bruxing.

When in place, during sleep, the *Myosa® for Teeth Grinders (TG)* appliance will protect against the damage caused by bruxing to the teeth as well as Temporomandibular Joint (TMJ). The appliance is customisable to fit most sized mouths and when moulded correctly provides excellent retention.



The *Myosa® for Teeth Grinders* range fits snugly to the upper arch, with good retention, during sleep and provides immediate protection for both the dentition and temporomandibular joints from any further damage caused by bruxing.

Myosa® for Teeth Grinders

The *Myosa® for Teeth Grinders (TG)* is specifically designed to work best for bruxers who do not show any symptoms of TMJ Disorder. The single layer appliance, which is made from flexible material, fits comfortably in any mouth size and when in place helps to reduce muscle tension around the mouth during sleep. Easily moulded, the *Myosa® for TG* soft version, is recommended for night time use as well as during the day if daytime grinding is a problem.

Myosa® TG - design features

Thickened base for increased protection.

Tongue guards assist in positioning the tongue correctly.

Easily mouldable in under 2 mins and can be remoulded.



Single layer for easy moulding and maximum comfort.

Aerofoil base decompresses the jaw joint.

Provides optimum jaw position and vertical opening for most patients.

Myosa® TG
Cross Section



TG
SOFT VERSION

Indications for use:

The *Myosa*® for *TG* is fitted over the teeth and worn at night while sleeping. It features a unique flat base designed to protect the teeth and jaws from the effects of night time teeth grinding. The *TG* is easy to mould in under 2 minutes.



Step 1 – Pour freshly boiled water into a glass bowl. Immediately place the appliance into water for 30 seconds upside down with base uppermost.



Step 2 – Gently lift appliance from water using a spoon and cool under tap water for one second only, bringing surface temperature to a comfortable level then quickly proceed with the next step.



Step 3 – Watching in mirror, line up centre of appliance with centre line of upper teeth and quickly proceed on pressing firmly into front teeth and molars.



Step 4 – Lightly close mouth to hold the appliance in position then create suction in the mouth while biting down. Continue for 20 seconds while moulding upper edges, front and back, by pushing firmly through lips and cheeks.



Step 5 – Place the appliance in cold water for 2 minutes to cool then reinsert to check fit. Repeat fitting procedure if necessary.

Clean your *Myosa*® appliance under warm running water every time you remove it from your mouth. Use *Myoclean*™ tablets to correctly clean twice a week.

Initially use your *TG* during the day to become accustomed to it.
Once accustomed, use your *TG* whilst sleeping.

Immediate Bruxing Solution

The *Myosa*[®] for Teeth Grinders (TG) is a moulded upper arch appliance designed to provide an immediate protective barrier against night time bruxing. The appliance, which can be fitted in less than 2 minutes, fits tightly over the upper teeth and provides a soft, flexible barrier that protects the teeth as well as the TMJ from the effects of bruxing. A harder version called the *Myosa*[®] for Teeth Grinders Hard (TGH) is also available for heavy bruxers who show signs of Temporomandibular Joint (TMJ) problems.

Design Features

- Thickened base for increased protection.
- Easily moulds in less than 2 minutes and can be remoulded.
- Comfortable to wear and provides good retention.
- Customisable for smaller sized mouths.

Cleaning your *Myosa*[®]: Clean your *Myosa*[®] appliance under warm running water every time you remove it from your mouth. Use *Myoclean*[™] tablets to correctly clean twice every week. Ask your doctor or dental therapist about *Myoclean*[™], the recommended cleaning agent for all *Myosa*[®] appliances.

Lifetime use: 6 months based on everyday wear. Replace after 12 months regardless of wear time.



Myosa[®] by Myofunctional Research Co.
Myofunctional Research Co. Australia
44 Siganto Drive, Helensvale QLD 4212 Australia
Tel: +61 7 5573 5999

USA Representative:

Myofunctional Research Co. USA
9267 Charles Smith Avenue, Rancho Cucamonga CA 91730 USA
PO Box 2781, Rancho Cucamonga CA 91730 USA
Tel: +1 909 587 4940



European Representative:

Myofunctional Research Europe B.V.
Gompenstraat 21c 5145 RM Waalwijk The Netherlands
P.O. Box 718, 5140 AS Waalwijk The Netherlands
Tel: +31 416 651 696

Single Patient Use.



**MYOFUNCTIONAL
RESEARCH CO.**
**INNOVATIVE DENTAL APPLIANCE
TECHNOLOGY AND EDUCATION**



KEEP OUT
OF DIRECT
SUNLIGHT



CLEAN
BEFORE USE

Myosa_TG_INS_1119_ENG_v3.0.2