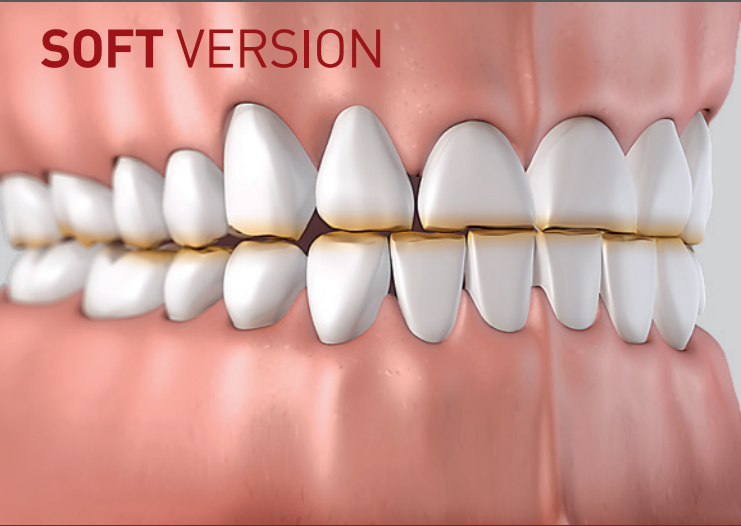


BRUXOGARD™

Protects your teeth and jaws
from night time bruxing

SOFT VERSION



BRUXOGARD™

www.myoresearch.com

WORLDWIDE PATENTS, FOR MORE INFORMATION VISIT MYORESEARCH.COM

BRUXOGARD™


The **BRUXOGARD™** is fitted over the teeth and worn at night while sleeping. It features a unique flat base specifically designed to protect your teeth and jaws from the effects of night tooth grinding (bruxing). The **BRUXOGARD™** is best moulded by your dentist. If you need further moulding, follow the below instructions.

BRUXOGARD™ SOFT MOULDING INSTRUCTIONS


READ ALL INSTRUCTIONS BEFORE BEGINNING THE MOULDING.

- 1 Place **BRUXOGARD™** (tongue tag down) into bowl of freshly boiled water (100°C / 212°F) for **30 SECONDS**.
- 2 Remove **BRUXOGARD™** from water using spoon and place it in the mouth, centring the V cut with the centre line of the front teeth.
- 3 Push up hard with the thumbs on the base and mould the upper edges at the front and the back teeth by pushing through the lips and cheeks firmly with your fingers.
- 4 Do not bite on the **BRUXOGARD™**. Lightly close your teeth together to hold in position. You want the base to be flat without indents of the lower teeth.
- 5 Place the tongue against tongue tag and suck in strongly. Continue to hold this for 20 seconds.
- 6 Remove the **BRUXOGARD™** from the mouth. Place in cold water for 20 seconds. Replace into mouth and test for a good firm fit. If the fit is not accurate repeat fitting procedure (reheat water to 100°C).

To clean, rinse under warm water. Use toothpaste to clean if desired. Heavy bruxers may wear the **BRUXOGARD™** out quickly. Replace if splitting and deterioration occurs.

 by **Myofunctional Research Co.**
Myofunctional Research Co. Australia:
44 Siganto Drive, Helensvale QLD 4212 Australia
Tel: +61 7 5573 5999

USA Representative:
Myofunctional Research Co. USA
9267 Charles Smith Avenue, Rancho Cucamonga CA 91730 USA
PO Box 2781, Rancho Cucamonga CA 91730 USA
Tel: +1 866 550 4696

 **European Representative:**
Myofunctional Research Europe B.V.
Gompenstraat 21c 5145 RM Waalwijk The Netherlands
P.O. Box 718, 5140 AS Waalwijk The Netherlands
Tel: +31 416 651 696

Single Patient Use.



**MYOFUNCTIONAL
RESEARCH CO.**

**INNOVATIVE DENTAL APPLIANCE
TECHNOLOGY AND EDUCATION**



BRUX_S_INS_0818_ENG_V1.0.0